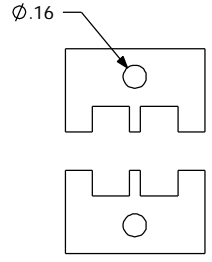
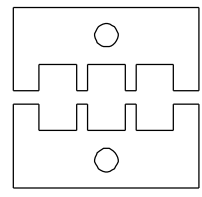


THE INFORMATION CONTAINED IN THIS DRAWING IS THE SOLE PROPERTY OF ANDERSON POWER PRODUCTS. ANY REPRODUCTION IN PART OR WHOLE WITHOUT THE WRITTEN PERMISSION OF ANDERSON POWER PRODUCTS IS PROHIBITED.

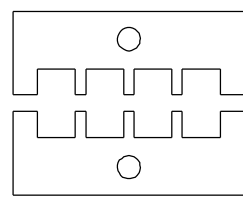
REV	DESCRIPTION OF CHANGES	DATE	BY



2 OR 4 POLE



3 OR 6 POLE



4 OR 8 POLE

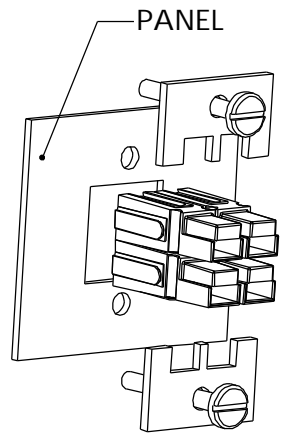
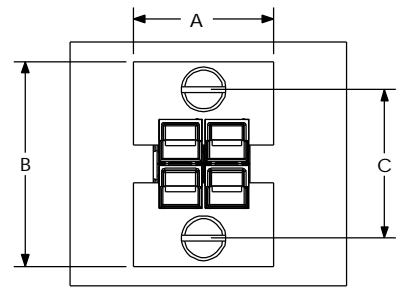


TABLE OF MOUNTING CLAMPS FOR PP15/45

CAT. NO	# of Poles	A		B		C		D/A	
		IN	MM	IN	MM	IN	MM	IN	MM
1462G1	2	.94	23.9	1.06	26.9	.68	17.3	.156	4.0
	4	.94	23.9	1.38	35.0	1.00	25.4	.156	4.0
1462G2	3	1.25	31.7	1.06	26.9	.68	17.3	.156	4.0
	6	1.25	31.7	1.38	35.0	1.00	25.4	.156	4.0
1462G3	4	1.56	39.6	1.06	26.9	.68	17.3	.156	4.0
	8	1.56	39.6	1.38	35.0	1.00	25.4	.156	4.0

NOTES:  
1. MOUNTING CLAMPS SOLD IN PAIRS, SCREWS NOT INCLUDED

ITEM NO.	PART OR IDENTIFYING NO.	NOMENCLATURE OR DESCRIPTION	MATERIAL SPECIFICATION	QTY REQD
COPYRIGHT 1999 ANDERSON POWER PRODUCTS. ALL RIGHTS RESERVED. UNAUTHORIZED REPRODUCTION HEREBY PROHIBITED.				
DIMENSIONS ARE IN INCHES DIMENSIONS IN PARENTHESES [ ] ARE IN MILLIMETERS		CAD GENERATED DRAWING, DO NOT MANUALLY UPDATE		<b>ANDERSON POWER PRODUCTS</b>
TOLERANCES ARE: 2PL- ±.02 [±.5]		APPROVALS	DATE	
MATERIALS: <b>AL- .06" THK</b>		DRAWN	CMS 11/3/99	<b>MOUNTING CLAMPS FOR PP15/45</b>
FINISH		CHECKED	DJD 11/3/99	
NEXT ASSY		RESP ENG	UFN 11/4/99	
USED ON		MFG ENG	CHB 11/8/99	
APPLICATION		QUAL ENG	RPO 11/8/99	SIZE A
DO NOT SCALE DRAWING		SPECIFICATION: 114208S1		REV. 0
		SCALE NONE		CADFILES/01138
				SHEET 1 OF 1