

APP's rugged Bus bar contacts are designed to attach directly to a copper bus, while offering a quick disconnect design that minimizes the expense of system assembly, replacement or repair. The contacts will handle 75 amps up to 350 amps and are used with the standard APP Powerpole® and SB® housings.

To ensure high conductivity and minimal electrical loss, APP's Bus bar contacts are manufactured from solid copper and silver-plated. The contacts are threaded to provide simple attachment to a bus without the need for special tooling.


FEATURES

- **Disconnect contacts**
Provide for modular assembly or simple field repair lowering manufacturing and maintenance costs
- **Hot swap ***
Allows for repair and maintenance of components without the need for powering down equipment
- **Solid copper contacts with silver plating**
Superior conductivity for lower heating

* Tested per UL1977 - overload and resistance to ARC - Based on singlepole



PRODUCT SPECIFICATIONS

Contact Information	PP75	PP180	SB® 50	SB®120	SB®175	SB®350
Maximum Current (per contact)	75 amps	180 amps	50 amps	120 amps	175 amps	350 amps
Maximum Voltage (AC or DC)	600					
Contact Material	99 % copper					
Plating	Silver					
Contact Resistance	<100 micro-ohms					
Mating Life-No Load (cycles)	10,000					
Mating Connector Information						
Contact Barrel Wire Size (AWG)*	#6 to #16	1/0 to #10	#6 to #16	#2 to #6	1/0 to #10	2/0 to 300mcm
Contact Barrel Wire Size (mm²)*	13.3 to 1.3	53.5 to 5.3	13.3 to 1.3	33.3 to 13.3	53.5 to 5.3	67.4 to 152
Housing Information	Powerpole and SB housings are manufactured using polycarbonate resin that meets UL94 V-0 requirements. Temperature range is -20° to 105°C / -4° to 221°F.					
<small>* Reducing bushing must be used to accommodate smaller wire sizes</small>						

ORDERING INFORMATION

Bus Bar Contact

Part Number	Description
75BBS	For use with PP75 / SB50
120BBS	For use with SB120 (SB only)
180BBS	For use with PP180 / SB175
350BBS	For use with SB350 (SB only)

Powerpole® PP180 Housings

Part Number	Description
1381	PP180 Housing, Blue
1381G1	PP180 Housing, Black
1381G2	PP180 Housing, White
1381G3	PP180 Housing, Red
1381G4	PP180 Housing, Green

SB® 175 Housings

Part Number	Description
940	SB Housing, Gray
941	SB Housing, Blue
942	SB Housing, Orange
943	SB Housing, Yellow
949	SB Housing, Red

Lock Nuts

Part Number	Description
110G54	For use with PP75 / SB50 / SB120 contact
110G55	For use with PP180 / SB175 contact
110G73	For use with SB350 contact

SB® 50 Housings

Part Number	Description
992	Gray
992G1	Red
992G2	Black
992G4	Blue
992G5	Yellow
992G6	Green
992G7	Orange

SB® 350 Housings

Part Number	Description
906	Gray
912	Blue
913	Red
914	Yellow
931	Green
932	Orange

Powerpole® PP75 Housings

Part Number	Description
5916	PP75 Housing, Blue
5916G4	PP75 Housing, Black
5916G5	PP75 Housing, White
5916G6	PP75 Housing, Green
5916G7	PP75 Housing, Red

SB® 120 Housings

Part Number	Description
6810G1	Gray
6810G2	Blue
6810G3	Red

Note: For additional Bus Bar connector designs and/or additional housing colors, please contact customer service.

HEADQUARTERS: 13 Pratts Junction Road, Sterling, MA 01564-2305 USA T:978-422-3600 F:978-422-3700

EUROPE: Rathealy Road, Fermoy Co. Cork, Ireland T:353-(0)25-32277 F:353-(0)25-32296

ASIA/PACIFIC: IDEAL Anderson Asia Pacific Ltd., Unit 922-928 Topsail Plaza, 11 On Sum Street, Shatin N.T., Hong Kong T:852-2636-0836 F:852-2635-9036

CHINA: IDEAL Anderson Technologies (Shenzhen) Ltd., Block A8 Tantou W. Ind. Par, Songgang Baoan District, Shenzhen, P.R. China 51810 T: 86-755-2768-2118 F: 86-755-2768-2218

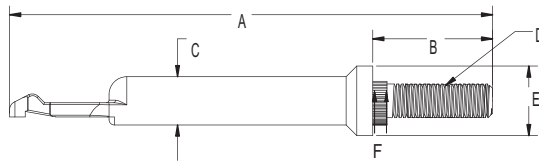
TAIWAN: IDEAL Anderson Asia Pacific Ltd., Taiwan Branch, 4F-2, No.116, Dadun 20th St., Situn District, Taichung City 407, Taiwan (R.O.C.) T: 886-4-2310-6451 F:886-4-2310-6460

www.andersonpower.com

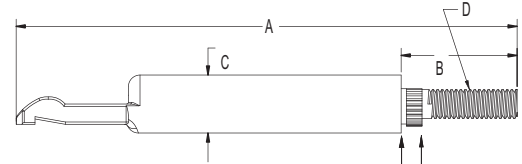
ORDERING INFORMATION

Contacts

Part Number	- A -		- B -		- C -		- D -	- E -		- F -		
	in.	mm	in.	mm	in.	mm		in.	mm	in.	mm	
75BBS	75	2.70	68.6	0.67	17.0	0.27	6.9	#10-24 thd.	0.04	1.0	0.08	2.0
120BBS	120	3.03	77.0	0.44	11.2	0.38	9.7	#10-24 thd.	N/A		0.10	2.5
180BBS	180	4.30	109.2	1.00	25.4	0.50	12.7	1/4-20 thd.	N/A		0.18	4.6
350BBS	350	5.19	131.8	0.88	22.4	0.67	17.0	3/8-16 thd.	N/A		0.10	2.5



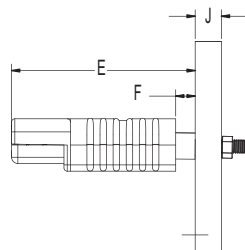
75BBS



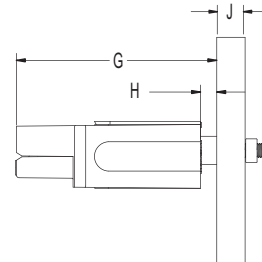
120BBS / 180BBS / 350BBS

Mounting Table

Part Number	Amps	- E -		- F -		- G -		- H -		- J -	
		in.	mm	in.	mm	in.	mm	in.	mm	in.	mm
75BBS	75	2.10	53.3	0.20	5.1	2.10	53.3	0.20	5.1	0.12 -0.050	3.0 -12.7
120BBS	120	2.70	68.6	0.20	5.1	N/A		N/A		0.12 -0.77	3.0 -19.6
180BBS	180	3.50	88.9	0.40	10.2	3.50	88.9	0.30	7.6	0.20 -0.75	5.0 -19.0
350BBS	350	4.45	113.0	0.20	5.1	N/A		N/A		0.12 -0.77	3.0 -19.6



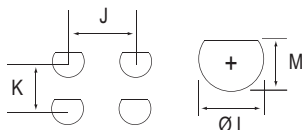
SB® View



Powerpole® View

Bus Bar Layout

Part Number	Amps	- J -		- K -		- L -		- M -	
		mm	in.	mm	in.	mm	in.	mm	in.
75BBS	75	19.1	0.75	17.3(min)	0.68(min)	6.73	0.265	2.92	0.115
120BBS	120	23.6	0.93	21.1(min)	0.83(min)	7.37	0.29	6.35	0.25
180BBS	180	26.8	1.05	26.8(min)	1.05(min)	9.53	0.375	3.43	0.135
350BBS	350	34.9	1.38	33.8(min)	1.33(min)	13.34	0.525	11.76	0.463



Mounting Dimensions

Lock Nuts

Part Number	Lock Nut	- A -		- B -	
		mm	in.	mm	in.
75BBS	#10-24 thd.	10.9	0.43	4.0	0.16
120BBS	#10-24 thd.	10.9	0.43	4.1	0.16
180BBS	1/4-20 thd.	12.9	0.51	6.0	0.23
350BBS	3/8-16 thd.	16.5	0.65	10.0	0.40

